

# TEST REPORT



Report No.: A2007132-C03-R06

Date: March 26, 2021

Page 1 of 27

**Applicant:** SHENZHEN BVSION TECHNOLOGY CO., LTD  
**Address:** Floor 5, Building 9, HuaFeng Industry Park, No.535, Feng Tong Road, Baoan Strict, Shenzhen, China

**The following sample(s) and sample information was/were submitted and identified by/on the behalf of the client:**

**Sample Name** Intelligent touch computer terminal  
**Model No.** VR215  
**Reference Information** VA215, VR236, VA236, VR270, VA270, VR320, VA320, XC101-R, XC101-A, XC101-W, XC140-R, XC140-A, XC140-W, XC121-R, XC121-A, XC121-W, XC156-R, XC156-A, XC156-W, XC150-R, XC150-A, XC150-W, XC170-R, XC170-A, XC170-W, XC215-R, XC215-A, XC215-W  
**Trademark**   
**Manufacturer** SHENZHEN BVSION TECHNOLOGY CO., LTD  
**Sample Received Date** September 07 , 2020  
**Testing Period** September 16 – 23, 2020 and March 25 – 26, 2021  
**Test Method & Test Result** Please refer to following pages.

## Test Requested

As specified by client, according to RoHS Directive 2011/65/EU with amendment (EU) 2015/863 to test Lead (Pb), Cadmium (Cd), Mercury (Hg), Hexavalent Chromium(Cr(VI)), Polybrominated Biphenyls(PBBs), Polybrominated Diphenyl Ethers(PBDEs), Phthalates(DBP, BBP, DEHP, DIBP) in the tested materials of the submitted sample(s).

## Result

Pass

**Tested by:**   
.....

**Approved by:**   
.....



**Reviewed by:**   
.....

**Date of issue:** March 26, 2021

# TEST REPORT



Report No.: A2007132-C03-R06

Date: March 26, 2021

Page 2 of 27

## Test Method

(1) XRF screening limits for regulated elements according to IEC 62321-3-1:2013 (Unit: mg/kg)

Element	Polymers	Metals	Composite material
Pb	$BL \leq (700-3\sigma) < X$ $< (1300+3\sigma) \leq OL$	$BL \leq (700-3\sigma) < X$ $< (1300+3\sigma) \leq OL$	$BL \leq (500-3\sigma) < X$ $< (1500+3\sigma) \leq OL$
Cd	$BL \leq (70-3\sigma) < X$ $< (130+3\sigma) \leq OL$	$BL \leq (70-3\sigma) < X$ $< (130+3\sigma) \leq OL$	$LOD < X < (150+3\sigma) \leq OL$
Hg	$BL \leq (700-3\sigma) < X$ $< (1300+3\sigma) \leq OL$	$BL \leq (700-3\sigma) < X$ $< (1300+3\sigma) \leq OL$	$BL \leq (500-3\sigma) < X$ $< (1500+3\sigma) \leq OL$
Cr	$BL \leq (700-3\sigma) < X$	$BL \leq (700-3\sigma) < X$	$BL \leq (500-3\sigma) < X$
Br	$BL \leq (300-3\sigma) < X$	N/A	$BL \leq (250-3\sigma) < X$

(2) Chemical screening limits for PBBs, PBDEs:

Test Item(s)	Screening limits(Unit: mg/kg)
Polybrominated Biphenyls (PBBs)	$BL^* \leq 200 < IN$
Polybrominated Diphenyl Ethers (PBDEs)	$BL^* \leq 200 < IN$

(3) Chemical screening limits for Phthalates

Test Item(s)	Screening limits(Unit: mg/kg)
Dibutyl phthalate(DBP)	$BL \leq 600 < IN$
Benzylbutyl phthalate(BBP)	$BL \leq 600 < IN$
Di-2-ethylhexyl phthalate(DEHP)	$BL \leq 600 < IN$
Diisobutyl phthalate(DIBP)	$BL \leq 600 < IN$

(4) Chemical Test

Test Item	Test Method	Test Instrument	MDL (mg/kg)	EU RoHS Limit (mg/kg)
Lead (Pb)	IEC 62321-5:2013	ICP-OES	2	1000
Cadmium (Cd)	IEC 62321-5:2013	ICP-OES	2	100
Mercury (Hg)	IEC 62321-4:2013 +AMD1:2017	ICP-OES	2	1000
Hexavalent Chromium (Cr(VI))	IEC 62321-7-2:2017 (non-metal)	UV-Vis	8	1000
	IEC 62321-7-1:2015 (metal)	UV-Vis	0.1( $\mu\text{g}/\text{cm}^2$ )	/
Polybrominated Biphenyls (PBBs)	IEC 62321-6:2015	GC-MS	5	1000
Polybrominated Diphenyl Ethers (PBDEs)	IEC 62321-6:2015	GC-MS	5	1000
Phthalates(DBP, BBP, DEHP, DIBP)	IEC 62321-8:2017	GC-MS	50	1000

# TEST REPORT



Report No.: A2007132-C03-R06

Date: March 26, 2021

Page 3 of 27

## Tested Materials Description

No.	Description	No.	Description
1	Transparent glass face board of display	26	Display screen polarization film(lower part )
2	Dark grey foam double adhesive of display face plate	27	Display screen
3	Transparent ITO glass plate	28	Display screen polarization film(upper part )
4	Black strip of display ITO glass plate	29	Black glue of display screen
5	Translucent double adhesive of ITO plate strip	30	IC
6	Brown FPC line of display ITO plate	31	Brown FPC of display screen
7	Black plastic face frame	32	Chip capacitor
8	Black tape of display backboard	33	Chip capacitor
9	Black patch of display backboard	34	Chip capacitor
10	White label sticker of display backboard	35	Chip diode
11	White barcode sticker of display backboard	36	Chip resistor
12	Light grey metal backboard of display	37	Chip resistor
13	Display backlight source LED lamp	38	Chip diode
14	White aluminum material plate of backlight source LED lamp	39	Chip inductor
15	White double adhesive of LED lamp material plate	40	Chip fuse
16	Beige yellow plastic terminal seat of LED lamp material plate	41	IC
17	White reflection film of display backlight source	42	IC
18	Transparent guide plate of display backlight source	43	IC
19	White film of backlight source guide plate	44	IC
20	Silvery grey film of backlight source guide plate	45	IC
21	Translucent diffusion membrane of display backlight source	46	Green PCB of display
22	Display backlight polarization film	47	Silvery metal of PCB board screen line connects seat
23	Black plastic frame of display backlight source	48	Beige yellow plastic seat of PCB board screen line connects seat
24	Black adhesive gasket of backlight source plastic frame	49	Silvery metal slice of display screen line terminal
25	Grey adhesive gasket of backlight source plastic frame	50	Beige yellow plastic terminal of screen line



# TEST REPORT



Report No.: A2007132-C03-R06

Date: March 26, 2021

Page 4 of 27

## Tested Materials Description

No.	Description	No.	Description
51	Black winding tape of display screen line	76	IC
52	Silvery metal shield net of display screen line	77	IC
53	Black heat-shrinkable tube sleeve of screen line shield net	78	Black PCB board of camera
54	Red thin wire sheath if display screen line	79	Black heat-shrinkable tube sleeve of PCB board connecting wire
55	Black thin wire sheath if display screen line	80	Black thick wire sheath of PCB board connecting wire
56	Blue thin wire sheath if display screen line	81	Red thin wire sheath of PCB board connecting wire
57	White thin wire sheath of display screen line	82	Black thin wire sheath of PCB board connecting wire
58	Black plastic terminal of display screen line	83	Green thin wire sheath of PCB board connecting wire
59	Red thin wire sheath of display backlight source connecting wire	84	White thin wire sheath of PCB board connecting wire
60	Black thin wire sheath of display backlight source connecting wire	85	Silvery metal of USB terminal seat
61	Translucent double adhesive of WIFI antenna plate	86	White plastic of USB terminal seat
62	Soldering tin on WIFI antenna plate	87	Red fixed glue of network port
63	Dark blue WIFI antenna plate	88	Silvery metal shell of network port
64	Black wire sheath of antenna coaxial line	89	Black plastic seat of network port
65	Silvery metal shield net of antenna coaxial line	90	Chip capacitor
66	Transparent thin wire sheath of antenna coaxial line	91	Network transformer
67	Copper IPEX joint of antenna coaxial line	92	Soldering tin on port PCB board
68	Black plastic mirror tube of camera	93	Black PCB board of port
69	Transparent lens of camera	94	White plastic terminal seat of PCB board
70	Black plastic seat of camera	95	Light blue thin wire sheath of PCB board connecting line
71	CMOS imaging sensor	96	Beige plastic terminal of connecting wire
72	Chip capacitor	97	Black plastic shell of speaker
73	Chip resistor	98	Black paper of speaker
74	Chip triode	99	Black ring of speaker
75	Chip crystal oscillator	100	Black dust cover of speaker

# TEST REPORT



Report No.: A2007132-C03-R06

Date: March 26, 2021

Page 5 of 27

## Tested Materials Description

No.	Description	No.	Description
101	Brown wave of speaker	126	Black rubber sleeve of electrolytic capacitor
102	Copper audio ring of speaker	127	Silvery aluminum shell of electrolytic capacitor
103	Silvery magnet of speaker	128	Black seal rubber mat of electrolytic capacitor
104	Silvery metal basin of speaker	129	Aluminum foil of electrolytic capacitor
105	Soldering tin on speaker	130	Electrolytic capacitor spacer
106	Red thin wire sheath of speaker connecting wire	131	Chip diode
107	Black thin wire sheath of speaker connecting wire	132	Chip diode
108	Silvery metal frame of key-press	133	Crystal diode
109	Beige yellow plastic button of key-press	134	Chip resistor
110	Silvery metal mat of key-press	135	PA110BDA field-effect tube
111	Black plastic seat of key-press	136	Copper coil of industrial inductor
112	Green PCB board of key-press	137	Black magnet core of industrial inductor
113	Red thin wire sheath of key-press PCB board connecting wire	138	IC
114	Black thin wire sheath of key-press PCB board connecting wire	139	Soldering tin on display backlight source
115	Chip capacitor	140	Green PCB board display backlight source
116	Chip capacitor	141	Red thin wire sheath of connecting line
117	Chip crystal oscillator	142	Black thin wire sheath of connecting line
118	IC	143	Yellow thin wire sheath of connecting line
119	IC	144	White plastic terminal of connecting wire
120	IC	145	Beige grey plastic terminal seat of PCB board
121	Blue PCB board of display screen ITO board	146	Beige plastic terminal seat of PCB board
122	Black plastic block of FPC line seat	147	Black plastic of PCB board connecting link
123	Beige grey plastic seat of FPC line seat	148	Copper metal pin of PCB board connecting link
124	White FPC line	149	Silvery metal shield cover of module PCB board
125	Light yellow fixed glue of PCB board	150	Chip capacitor

# TEST REPORT



Report No.: A2007132-C03-R06

Date: March 26, 2021

Page 6 of 27

## Tested Materials Description

No.	Description	No.	Description
151	Chip filter	176	Chip capacitor
152	IC	177	Chip capacitor
153	Green PCB board of module	178	Chip capacitor
154	Black plastic button of key-press	179	Chip capacitor
155	Silvery metal mat of key-press	180	Chip diode
156	Beige yellow plastic seat of key-press	181	Chip diode
157	Silvery metal pin of DC seat	182	Chip diode
158	Silvery metal slice of DC seat	183	Chip resistor
159	Black plastic seat of DC seat	184	Chip resistor
160	Silvery metal of mini USB terminal seat	185	Chip resistor
161	Black plastic of mini USB terminal seat	186	Chip triode
162	Red fixed glue of USB terminal seat	187	Chip triode
163	Silvery metal of USB terminal seat	188	Chip triode
164	Beige grey plastic of USB terminal seat	189	Chip one inductor
165	Silvery metal slice of audio seat	190	Chip inductor
166	Black plastic seat of audio seat	191	Chip inductor
167	Silvery metal card cover of SD card seat	192	Chip crystal oscillator
168	Beige grey plastic card slot of SD card seat	193	Quartz crystal oscillator
169	Copper metal of HDMI port	194	Chip LED lamp
170	Black plastic of HDMI port	195	Black heat sink of CPU chip
171	Copper electrode slice of button cell	196	Silvery metal cover of CPU chip
172	Brown plastic button cell	197	CPU chip
173	Black plastic button of reset key-press	198	Dark green material plate of CPU chip
174	Silvery metal mat of reset key-press	199	IC
175	Beige grey plastic seat of reset key-press	200	IC



# TEST REPORT



Report No.: A2007132-C03-R06

Date: March 26, 2021

Page 7 of 27

## Tested Materials Description

No.	Description	No.	Description
201	IC	226	Silvery metal heat sink of PCB board
202	IC	227	Transparent rubber sleeve tube of PCB jumper line
203	IC	228	Yellow green wire sheath of PCB jumper line
204	IC	229	White fixed glue of PCB board
205	IC	230	Yellow tape of transformer
206	IC	231	Black magnet core of transformer
207	IC	232	Yellow tape of transformer coil
208	IC	233	Copper coil of transformer
209	IC	234	Translucent rubber sleeve tube of transformer coil
210	Soldering tin on host PCB board	235	Black rubber sleeve tube of transformer coil
211	Black host PCB board	236	Orange wire sheath of transformer enameled wire
212	Silvery metal lining plate	237	Black wire frame of transformer
213	Silvery metal nut of lining plate	238	Chip LED indicator light
214	Silvery metal mesh enclosure	239	Black rubber sleeve of electrolytic capacitor
215	Black plastic key-press of rear shell	240	Dark green rubber sleeve of electrolytic capacitor
216	Black plastic baffle of rear shell	241	Silvery aluminum shell of electrolytic capacitor
217	Black plastic rear shell	242	Black seal rubber mat of electrolytic capacitor
218	Copper metal nut of rear shell	243	Aluminum foil of electrolytic capacitor
219	Copper metal nut of rear shell	244	Electrolytic capacitor spacer
220	Black glue patch of adapter shell	245	Ampere gauge capacitor
221	Transparent plastic block of adapter shell	246	Porcelain capacitor
222	Black plastic shell of adapter	247	Ampere Y capacitor
223	Silvery metal needle of power socket	248	Schottky diode
224	Black plastic seat of power socket	249	PS40U100CT Schottky diode
225	Yellow tape of PCB board heat sink	250	Chip diode

# TEST REPORT



Report No.: A2007132-C03-R06

Date: March 26, 2021

Page 8 of 27

## Tested Materials Description

No.	Description	No.	Description
251	Piezoresistor	271	Black heat-shrinkable tube sleeve of adapter wire
252	Thermistor	272	Black plastic of adapter wire magnet ring
253	Black heat-shrinkable tube sleeve of color ring resistor	273	Black magnet ring of adapter
254	Color ring resistor	274	Black thick wire sheath of adapter wire
255	Chip resistor	275	White thin wire sheath of adapter wire
256	ISA10N60A field-effect tube	276	Black plastic head of adapter wire DC terminal
257	Black heat rubber set of magnet ring inductor	277	Soldering tin on adapter wire DC terminal
258	Copper coil of magnet ring	278	Black plastic of adapter wire DC terminal
259	Green magnet ring of magnet ring	279	Silvery metal of adapter wire DC terminal
260	Black fixed glue of common mode inductor	280	Black plastic head of power wire product tail
261	Light yellow screen of common mode inductor	281	White plastic of power wire product tail
262	Copper coil of common mode inductor	282	Copper metal mother needle of power wire product tail
263	Green magnet ring of common mode inductor	283	Black thick wire sheath of power wire
264	Block fuse	284	Brown thin wire sheath of power wire
265	Rectifier bridge	285	Blue thin wire sheath of power wire
266	IC	286	Yellow green thin wire sheath of power wire
267	IC	287	Copper wire core of power wire
268	Soldering tin on adapter PCB board	288	Black plastic head of power plug
269	Green PCB board of adapter	289	White plastic of power plug
270	Black plastic tail card of adapter wire	290	Silvery metal plug of power wire





# TEST REPORT

Report No.: A2007132-C03-R06

Date: March 26, 2021

Page 9 of 27

## Test result

### (1) Screening Result

Tested Item(s)	Screening Result (mg/kg)									
	1	2	3	4	5	6	7	8	9	10
Lead (Pb)	BL	BL	BL	BL	BL	BL	BL	BL	BL	BL
Cadmium (Cd)	BL	BL	BL	BL	BL	BL	BL	BL	BL	BL
Mercury (Hg)	BL	BL	BL	BL	BL	BL	BL	BL	BL	BL
Total Chromium (Cr)	BL	BL	BL	BL	BL	BL	BL	BL	BL	BL
Total Bromine (PBBs & PBDEs)	BL	BL	BL	BL	BL	BL	BL	BL	BL	BL
Dibutyl phthalate(DBP)	BL	BL	BL	BL	BL	BL	BL	BL	BL	BL
Benzylbutyl phthalate(BBP)	BL	BL	BL	BL	BL	BL	BL	BL	BL	BL
Di-2-ethylhexyl phthalate(DEHP)	BL	BL	BL	BL	BL	BL	BL	BL	BL	BL
Diisobutyl phthalate(DIBP)	BL	BL	BL	BL	BL	BL	BL	BL	BL	BL

Tested Item(s)	Screening Result (mg/kg)									
	11	12	13	14	15	16	17	18	19	20
Lead (Pb)	BL	BL	BL	BL	BL	BL	BL	BL	BL	BL
Cadmium (Cd)	BL	BL	BL	BL	BL	BL	BL	BL	BL	BL
Mercury (Hg)	BL	BL	BL	BL	BL	BL	BL	BL	BL	BL
Total Chromium (Cr)	BL	BL	BL	BL	BL	BL	BL	BL	BL	BL
Total Bromine (PBBs & PBDEs)	BL	N/A	BL	N/A	BL	BL	BL	BL	BL	BL
Dibutyl phthalate(DBP)	BL	N/A	BL	N/A	BL	BL	BL	BL	BL	BL
Benzylbutyl phthalate(BBP)	BL	N/A	BL	N/A	BL	BL	BL	BL	BL	BL
Di-2-ethylhexyl phthalate(DEHP)	BL	N/A	BL	N/A	BL	BL	BL	BL	BL	BL
Diisobutyl phthalate(DIBP)	BL	N/A	BL	N/A	BL	BL	BL	BL	BL	BL

Tested Item(s)	Screening Result (mg/kg)									
	21	22	23	24	25	26	27	28	29	30
Lead (Pb)	BL	BL	BL	BL	BL	BL	BL	BL	BL	BL
Cadmium (Cd)	BL	BL	BL	BL	BL	BL	BL	BL	BL	BL
Mercury (Hg)	BL	BL	BL	BL	BL	BL	BL	BL	BL	BL
Total Chromium (Cr)	BL	BL	BL	BL	BL	BL	BL	BL	BL	BL
Total Bromine (PBBs & PBDEs)	BL	BL	BL	BL	BL	BL	BL	BL	BL	BL
Dibutyl phthalate(DBP)	BL	BL	BL	BL	BL	BL	BL	BL	BL	BL
Benzylbutyl phthalate(BBP)	BL	BL	BL	BL	BL	BL	BL	BL	BL	BL
Di-2-ethylhexyl phthalate(DEHP)	BL	BL	BL	BL	BL	BL	BL	BL	BL	BL
Diisobutyl phthalate(DIBP)	BL	BL	BL	BL	BL	BL	BL	BL	BL	BL



# TEST REPORT

Report No.: A2007132-C03-R06

Date: March 26, 2021

Page 10 of 27

## (1) Screening Result

Tested Item(s)	Screening Result (mg/kg)									
	31	32	33	34	35	36	37	38	39	40
Lead (Pb)	BL	BL	BL	BL	BL	BL	BL	BL	BL	BL
Cadmium (Cd)	BL	BL	BL	BL	BL	BL	BL	BL	BL	BL
Mercury (Hg)	BL	BL	BL	BL	BL	BL	BL	BL	BL	BL
Total Chromium (Cr)	BL	BL	BL	BL	BL	BL	BL	BL	X	BL
Total Bromine (PBBs & PBDEs)	BL	BL	BL	BL	BL	BL	BL	BL	BL	BL
Dibutyl phthalate(DBP)	BL	BL	BL	BL	BL	BL	BL	BL	BL	BL
Benzylbutyl phthalate(BBP)	BL	BL	BL	BL	BL	BL	BL	BL	BL	BL
Di-2-ethylhexyl phthalate(DEHP)	BL	BL	BL	BL	BL	BL	BL	BL	BL	BL
Diisobutyl phthalate(DIBP)	BL	BL	BL	BL	BL	BL	BL	BL	BL	BL

Tested Item(s)	Screening Result (mg/kg)									
	41	42	43	44	45	46	47	48	49	50
Lead (Pb)	BL	BL	BL	BL	BL	BL	BL	BL	BL	BL
Cadmium (Cd)	BL	BL	BL	BL	BL	BL	BL	BL	BL	BL
Mercury (Hg)	BL	BL	BL	BL	BL	BL	BL	BL	BL	BL
Total Chromium (Cr)	BL	BL	BL	BL	BL	BL	X	BL	X	BL
Total Bromine (PBBs & PBDEs)	BL	BL	BL	BL	BL	BL	N/A	BL	N/A	BL*
Dibutyl phthalate(DBP)	BL	BL	BL	BL	BL	BL	N/A	BL	N/A	BL
Benzylbutyl phthalate(BBP)	BL	BL	BL	BL	BL	BL	N/A	BL	N/A	BL
Di-2-ethylhexyl phthalate(DEHP)	BL	BL	BL	BL	BL	BL	N/A	BL	N/A	BL
Diisobutyl phthalate(DIBP)	BL	BL	BL	BL	BL	BL	N/A	BL	N/A	BL

Tested Item(s)	Screening Result (mg/kg)									
	51	52	53	54	55	56	57	58	59 <sup>#</sup>	60 <sup>#</sup>
Lead (Pb)	BL	BL	BL	BL	BL	BL	BL	BL	BL	BL
Cadmium (Cd)	BL	BL	BL	BL	BL	BL	BL	BL	BL	BL
Mercury (Hg)	BL	BL	BL	BL	BL	BL	BL	BL	BL	BL
Total Chromium (Cr)	BL	BL	BL	BL	BL	BL	BL	BL	BL	BL
Total Bromine (PBBs & PBDEs)	BL	N/A	BL	BL	BL	BL	BL	BL	BL	BL
Dibutyl phthalate(DBP)	BL	N/A	BL	BL	BL	BL	BL	BL	BL	BL
Benzylbutyl phthalate(BBP)	BL	N/A	BL	BL	BL	BL	BL	BL	BL	BL
Di-2-ethylhexyl phthalate(DEHP)	BL	N/A	BL	BL	BL	BL	BL	BL	BL	BL
Diisobutyl phthalate(DIBP)	BL	N/A	BL	BL	BL	BL	BL	BL	BL	BL

# TEST REPORT



Report No.: A2007132-C03-R06

Date: March 26, 2021

Page 11 of 27

## (1) Screening Result

Tested Item(s)	Screening Result (mg/kg)									
	61	62	63	64	65	66	67	68	69	70
Lead (Pb)	BL	BL	BL	BL	BL	BL	BL	BL	BL	BL
Cadmium (Cd)	BL	BL	BL	BL	BL	BL	BL	BL	BL	BL
Mercury (Hg)	BL	BL	BL	BL	BL	BL	BL	BL	BL	BL
Total Chromium (Cr)	BL	BL	BL	BL	BL	BL	BL	BL	BL	BL
Total Bromine (PBBs & PBDEs)	BL	N/A	BL*	BL	N/A	BL	N/A	BL	BL	BL
Dibutyl phthalate(DBP)	BL	N/A	BL	BL	N/A	BL	N/A	BL	BL	BL
Benzylbutyl phthalate(BBP)	BL	N/A	BL	BL	N/A	BL	N/A	BL	BL	BL
Di-2-ethylhexyl phthalate(DEHP)	BL	N/A	BL	BL	N/A	BL	N/A	BL	BL	BL
Diisobutyl phthalate(DIBP)	BL	N/A	BL	BL	N/A	BL	N/A	BL	BL	BL

Tested Item(s)	Screening Result (mg/kg)									
	71	72	73	74	75	76	77	78	79	80
Lead (Pb)	BL	BL	BL	BL	BL	BL	BL	BL	BL	BL
Cadmium (Cd)	BL	BL	BL	BL	BL	BL	BL	BL	BL	BL
Mercury (Hg)	BL	BL	BL	BL	BL	BL	BL	BL	BL	BL
Total Chromium (Cr)	BL	BL	BL	BL	BL	BL	BL	BL	BL	BL
Total Bromine (PBBs & PBDEs)	BL	BL	BL	BL	N/A	BL	BL	BL*	BL	BL
Dibutyl phthalate(DBP)	BL	BL	BL	BL	N/A	BL	BL	BL	BL	BL
Benzylbutyl phthalate(BBP)	BL	BL	BL	BL	N/A	BL	BL	BL	BL	BL
Di-2-ethylhexyl phthalate(DEHP)	BL	BL	BL	BL	N/A	BL	BL	BL	BL	BL
Diisobutyl phthalate(DIBP)	BL	BL	BL	BL	N/A	BL	BL	BL	BL	BL

Tested Item(s)	Screening Result (mg/kg)									
	81	82	83	84	85	86	87	88	89	90
Lead (Pb)	BL	BL	BL	BL	BL	BL	BL	BL	BL	BL
Cadmium (Cd)	BL	BL	BL	BL	BL	BL	BL	BL	BL	BL
Mercury (Hg)	BL	BL	BL	BL	BL	BL	BL	BL	BL	BL
Total Chromium (Cr)	BL	BL	BL	BL	BL	BL	BL	BL	BL	BL
Total Bromine (PBBs & PBDEs)	BL	BL	BL	BL	N/A	BL	BL	N/A	BL	BL
Dibutyl phthalate(DBP)	BL	BL	BL	BL	N/A	BL	BL	N/A	BL	BL
Benzylbutyl phthalate(BBP)	BL	BL	BL	BL	N/A	BL	BL	N/A	BL	BL
Di-2-ethylhexyl phthalate(DEHP)	BL	BL	BL	BL	N/A	BL	BL	N/A	BL	BL
Diisobutyl phthalate(DIBP)	BL	BL	BL	BL	N/A	BL	BL	N/A	BL	BL



# TEST REPORT



Report No.: A2007132-C03-R06

Date: March 26, 2021

Page 12 of 27

## (1) Screening Result

Tested Item(s)	Screening Result (mg/kg)									
	91	92	93	94	95	96	97	98	99	100
Lead (Pb)	BL	BL	BL	BL	BL	BL	BL	BL	BL	BL
Cadmium (Cd)	BL	BL	BL	BL	BL	BL	BL	BL	BL	BL
Mercury (Hg)	BL	BL	BL	BL	BL	BL	BL	BL	BL	BL
Total Chromium (Cr)	BL	BL	BL	BL	BL	BL	BL	BL	BL	BL
Total Bromine (PBBs & PBDEs)	BL	N/A	BL*	BL	BL	BL	BL*	BL	BL	BL
Dibutyl phthalate(DBP)	BL	N/A	BL	BL	BL	BL	BL	BL	BL	BL
Benzylbutyl phthalate(BBP)	BL	N/A	BL	BL	BL	BL	BL	BL	BL	BL
Di-2-ethylhexyl phthalate(DEHP)	BL	N/A	BL	BL	BL	BL	BL	BL	BL	BL
Diisobutyl phthalate(DIBP)	BL	N/A	BL	BL	BL	BL	BL	BL	BL	BL

Tested Item(s)	Screening Result (mg/kg)									
	101	102	103	104	105	106	107	108	109	110
Lead (Pb)	BL	BL	BL	BL	BL	BL	BL	BL	BL	BL
Cadmium (Cd)	BL	BL	BL	BL	BL	BL	BL	BL	BL	BL
Mercury (Hg)	BL	BL	BL	BL	BL	BL	BL	BL	BL	BL
Total Chromium (Cr)	BL	BL	BL	BL	BL	BL	BL	X	BL	X
Total Bromine (PBBs & PBDEs)	BL	N/A	N/A	N/A	N/A	BL	BL	N/A	BL	N/A
Dibutyl phthalate(DBP)	BL	N/A	N/A	N/A	N/A	BL	BL	N/A	BL	N/A
Benzylbutyl phthalate(BBP)	BL	N/A	N/A	N/A	N/A	BL	BL	N/A	BL	N/A
Di-2-ethylhexyl phthalate(DEHP)	BL	N/A	N/A	N/A	N/A	BL	BL	N/A	BL	N/A
Diisobutyl phthalate(DIBP)	BL	N/A	N/A	N/A	N/A	BL	BL	N/A	BL	N/A

Tested Item(s)	Screening Result (mg/kg)									
	111	112	113	114	115	116	117	118	119	120
Lead (Pb)	BL	BL	BL	BL	BL	BL	BL	BL	BL	BL
Cadmium (Cd)	BL	BL	BL	BL	BL	BL	BL	BL	BL	BL
Mercury (Hg)	BL	BL	BL	BL	BL	BL	BL	BL	BL	BL
Total Chromium (Cr)	BL	BL	BL	BL	BL	BL	BL	BL	BL	BL
Total Bromine (PBBs & PBDEs)	BL	BL	BL	BL	BL	BL	N/A	BL	BL	BL
Dibutyl phthalate(DBP)	BL	BL	BL	BL	BL	BL	N/A	BL	BL	BL
Benzylbutyl phthalate(BBP)	BL	BL	BL	BL	BL	BL	N/A	BL	BL	BL
Di-2-ethylhexyl phthalate(DEHP)	BL	BL	BL	BL	BL	BL	N/A	BL	BL	BL
Diisobutyl phthalate(DIBP)	BL	BL	BL	BL	BL	BL	N/A	BL	BL	BL

# TEST REPORT



Report No.: A2007132-C03-R06

Date: March 26, 2021

Page 13 of 27

## (1) Screening Result

Tested Item(s)	Screening Result (mg/kg)									
	121	122	123	124	125	126	127	128	129	130
Lead (Pb)	BL	BL	BL	BL	BL	BL	BL	BL	BL	BL
Cadmium (Cd)	BL	BL	BL	BL	BL	BL	BL	BL	BL	BL
Mercury (Hg)	BL	BL	BL	BL	BL	BL	BL	BL	BL	BL
Total Chromium (Cr)	BL	BL	BL	BL	BL	BL	BL	BL	BL	BL
Total Bromine (PBBs & PBDEs)	BL*	BL	BL	BL*	BL	BL	N/A	BL	N/A	BL
Dibutyl phthalate(DBP)	BL	BL	BL	BL	BL	BL	N/A	BL	N/A	BL
Benzylbutyl phthalate(BBP)	BL	BL	BL	BL	BL	BL	N/A	BL	N/A	BL
Di-2-ethylhexyl phthalate(DEHP)	BL	BL	BL	BL	BL	BL	N/A	BL	N/A	BL
Diisobutyl phthalate(DIBP)	BL	BL	BL	BL	BL	BL	N/A	BL	N/A	BL

Tested Item(s)	Screening Result (mg/kg)									
	131	132	133	134	135	136	137	138	139	140
Lead (Pb)	BL	BL	OL<sup>1</sup>	BL	BL	BL	BL	BL	BL	BL
Cadmium (Cd)	BL	BL	BL	BL	BL	BL	BL	BL	BL	BL
Mercury (Hg)	BL	BL	BL	BL	BL	BL	BL	BL	BL	BL
Total Chromium (Cr)	BL	BL	BL	BL	BL	BL	BL	BL	BL	BL
Total Bromine (PBBs & PBDEs)	BL	BL	BL	BL	BL	N/A	BL	BL	N/A	BL*
Dibutyl phthalate(DBP)	BL	BL	BL	BL	BL	N/A	BL	BL	N/A	BL
Benzylbutyl phthalate(BBP)	BL	BL	BL	BL	BL	N/A	BL	BL	N/A	BL
Di-2-ethylhexyl phthalate(DEHP)	BL	BL	BL	BL	BL	N/A	BL	BL	N/A	BL
Diisobutyl phthalate(DIBP)	BL	BL	BL	BL	BL	N/A	BL	BL	N/A	BL

Tested Item(s)	Screening Result (mg/kg)									
	141	142	143	144	145	146	147	148	149	150
Lead (Pb)	BL	BL	BL	BL	BL	BL	BL	BL	BL	BL
Cadmium (Cd)	BL	BL	BL	BL	BL	BL	BL	BL	BL	BL
Mercury (Hg)	BL	BL	BL	BL	BL	BL	BL	BL	BL	BL
Total Chromium (Cr)	BL	BL	BL	BL	BL	BL	BL	BL	BL	BL
Total Bromine (PBBs & PBDEs)	BL	BL	BL	BL	BL	BL	BL*	N/A	N/A	BL
Dibutyl phthalate(DBP)	BL	BL	BL	BL	BL	BL	BL	N/A	N/A	BL
Benzylbutyl phthalate(BBP)	BL	BL	BL	BL	BL	BL	BL	N/A	N/A	BL
Di-2-ethylhexyl phthalate(DEHP)	BL	BL	BL	BL	BL	BL	BL	N/A	N/A	BL
Diisobutyl phthalate(DIBP)	BL	BL	BL	BL	BL	BL	BL	N/A	N/A	BL

# TEST REPORT



Report No.: A2007132-C03-R06

Date: March 26, 2021

Page 14 of 27

## (1) Screening Result

Tested Item(s)	Screening Result (mg/kg)									
	151	152	153	154	155	156	157	158	159	160
Lead (Pb)	BL	BL	BL	BL	BL	BL	BL	BL	BL	BL
Cadmium (Cd)	BL	BL	BL	BL	BL	BL	BL	BL	BL	BL
Mercury (Hg)	BL	BL	BL	BL	BL	BL	BL	BL	BL	BL
Total Chromium (Cr)	BL	BL	BL	BL	X	BL	BL	BL	BL	BL
Total Bromine (PBBs & PBDEs)	BL	BL	BL	BL	N/A	BL	N/A	N/A	BL*	N/A
Dibutyl phthalate(DBP)	BL	BL	BL	BL	N/A	BL	N/A	N/A	BL	N/A
Benzylbutyl phthalate(BBP)	BL	BL	BL	BL	N/A	BL	N/A	N/A	BL	N/A
Di-2-ethylhexyl phthalate(DEHP)	BL	BL	BL	BL	N/A	BL	N/A	N/A	BL	N/A
Diisobutyl phthalate(DIBP)	BL	BL	BL	BL	N/A	BL	N/A	N/A	BL	N/A

Tested Item(s)	Screening Result (mg/kg)									
	161	162	163	164	165	166	167	168	169	170
Lead (Pb)	BL	BL	BL	BL	BL	BL	BL	BL	BL	BL
Cadmium (Cd)	BL	BL	BL	BL	BL	BL	BL	BL	BL	BL
Mercury (Hg)	BL	BL	BL	BL	BL	BL	BL	BL	BL	BL
Total Chromium (Cr)	BL	BL	BL	BL	BL	BL	BL	BL	BL	BL
Total Bromine (PBBs & PBDEs)	BL	BL	N/A	BL	N/A	BL	N/A	BL	N/A	BL
Dibutyl phthalate(DBP)	BL	BL	N/A	BL	N/A	BL	N/A	BL	N/A	BL
Benzylbutyl phthalate(BBP)	BL	BL	N/A	BL	N/A	BL	N/A	BL	N/A	BL
Di-2-ethylhexyl phthalate(DEHP)	BL	BL	N/A	BL	N/A	BL	N/A	BL	N/A	BL
Diisobutyl phthalate(DIBP)	BL	BL	N/A	BL	N/A	BL	N/A	BL	N/A	BL

Tested Item(s)	Screening Result (mg/kg)									
	171	172	173	174	175	176	177	178	179	180
Lead (Pb)	BL	BL	BL	BL	BL	BL	BL	BL	BL	BL
Cadmium (Cd)	BL	BL	BL	BL	BL	BL	BL	BL	BL	BL
Mercury (Hg)	BL	BL	BL	BL	BL	BL	BL	BL	BL	BL
Total Chromium (Cr)	BL	BL	BL	X	BL	BL	BL	BL	BL	BL
Total Bromine (PBBs & PBDEs)	N/A	BL	BL	N/A	BL	BL	BL	BL	BL	BL
Dibutyl phthalate(DBP)	N/A	BL	BL	N/A	BL	BL	BL	BL	BL	BL
Benzylbutyl phthalate(BBP)	N/A	BL	BL	N/A	BL	BL	BL	BL	BL	BL
Di-2-ethylhexyl phthalate(DEHP)	N/A	BL	BL	N/A	BL	BL	BL	BL	BL	BL
Diisobutyl phthalate(DIBP)	N/A	BL	BL	N/A	BL	BL	BL	BL	BL	BL



# TEST REPORT



Report No.: A2007132-C03-R06

Date: March 26, 2021

Page 15 of 27

## (1) Screening Result

Tested Item(s)	Screening Result (mg/kg)									
	181	182	183	184	185	186	187	188	189	190
Lead (Pb)	BL	BL	BL	BL	BL	BL	BL	BL	BL	BL
Cadmium (Cd)	BL	BL	BL	BL	BL	BL	BL	BL	BL	BL
Mercury (Hg)	BL	BL	BL	BL	BL	BL	BL	BL	BL	BL
Total Chromium (Cr)	BL	BL	BL	BL	BL	BL	BL	BL	X	X
Total Bromine (PBBs & PBDEs)	BL	BL	BL	BL	BL	BL*	BL	BL	BL	BL
Dibutyl phthalate(DBP)	BL	BL	BL	BL	BL	BL	BL	BL	BL	BL
Benzylbutyl phthalate(BBP)	BL	BL	BL	BL	BL	BL	BL	BL	BL	BL
Di-2-ethylhexyl phthalate(DEHP)	BL	BL	BL	BL	BL	BL	BL	BL	BL	BL
Diisobutyl phthalate(DIBP)	BL	BL	BL	BL	BL	BL	BL	BL	BL	BL

Tested Item(s)	Screening Result (mg/kg)									
	191	192	193	194	195	196	197	198	199	200
Lead (Pb)	BL	BL	BL	BL	BL	BL	BL	BL	BL	BL
Cadmium (Cd)	BL	BL	BL	BL	BL	BL	BL	BL	BL	BL
Mercury (Hg)	BL	BL	BL	BL	BL	BL	BL	BL	BL	BL
Total Chromium (Cr)	BL	BL	BL	BL	BL	BL	BL	BL	BL	BL
Total Bromine (PBBs & PBDEs)	BL	N/A	BL	BL	N/A	N/A	BL	BL	BL	BL
Dibutyl phthalate(DBP)	BL	N/A	BL	BL	N/A	N/A	BL	BL	BL	BL
Benzylbutyl phthalate(BBP)	BL	N/A	BL	BL	N/A	N/A	BL	BL	BL	BL
Di-2-ethylhexyl phthalate(DEHP)	BL	N/A	BL	BL	N/A	N/A	BL	BL	BL	BL
Diisobutyl phthalate(DIBP)	BL	N/A	BL	BL	N/A	N/A	BL	BL	BL	BL

Tested Item(s)	Screening Result (mg/kg)									
	201	202	203	204	205	206	207	208	209	210
Lead (Pb)	BL	BL	BL	BL	BL	BL	BL	BL	BL	BL
Cadmium (Cd)	BL	BL	BL	BL	BL	BL	BL	BL	BL	BL
Mercury (Hg)	BL	BL	BL	BL	BL	BL	BL	BL	BL	BL
Total Chromium (Cr)	BL	BL	BL	BL	BL	BL	BL	BL	BL	BL
Total Bromine (PBBs & PBDEs)	BL	BL	BL	BL	BL	BL	BL	BL	BL	N/A
Dibutyl phthalate(DBP)	BL	BL	BL	BL	BL	BL	BL	BL	BL	N/A
Benzylbutyl phthalate(BBP)	BL	BL	BL	BL	BL	BL	BL	BL	BL	N/A
Di-2-ethylhexyl phthalate(DEHP)	BL	BL	BL	BL	BL	BL	BL	BL	BL	N/A
Diisobutyl phthalate(DIBP)	BL	BL	BL	BL	BL	BL	BL	BL	BL	N/A

# TEST REPORT



Report No.: A2007132-C03-R06

Date: March 26, 2021

Page 16 of 27

## (1) Screening Result

Tested Item(s)	Screening Result (mg/kg)									
	211	212	213	214	215	216	217	218	219	220
Lead (Pb)	BL	BL	BL	BL	BL	BL	BL	OL*	OL*	BL
Cadmium (Cd)	BL	BL	BL	BL	BL	BL	BL	BL	BL	BL
Mercury (Hg)	BL	BL	BL	BL	BL	BL	BL	BL	BL	BL
Total Chromium (Cr)	BL	BL	BL	BL	BL	BL	BL	BL	BL	BL
Total Bromine (PBBs & PBDEs)	BL*	N/A	N/A	N/A	BL	BL	BL	N/A	N/A	BL
Dibutyl phthalate(DBP)	BL	N/A	N/A	N/A	BL	BL	BL	N/A	N/A	BL
Benzylbutyl phthalate(BBP)	BL	N/A	N/A	N/A	BL	BL	BL	N/A	N/A	BL
Di-2-ethylhexyl phthalate(DEHP)	BL	N/A	N/A	N/A	BL	BL	BL	N/A	N/A	BL
Diisobutyl phthalate(DIBP)	BL	N/A	N/A	N/A	BL	BL	BL	N/A	N/A	BL

Tested Item(s)	Screening Result (mg/kg)									
	221	222	223	224	225	226	227	228	229	230
Lead (Pb)	BL	BL	BL	BL	BL	BL	BL	BL	BL	BL
Cadmium (Cd)	BL	BL	BL	BL	BL	BL	BL	BL	BL	BL
Mercury (Hg)	BL	BL	BL	BL	BL	BL	BL	BL	BL	BL
Total Chromium (Cr)	BL	BL	BL	BL	BL	BL	BL	BL	BL	BL
Total Bromine (PBBs & PBDEs)	BL	BL	N/A	BL*	BL	N/A	BL	BL	BL	BL
Dibutyl phthalate(DBP)	BL	BL	N/A	BL	BL	N/A	BL	BL	BL	BL
Benzylbutyl phthalate(BBP)	BL	BL	N/A	BL	BL	N/A	BL	BL	BL	BL
Di-2-ethylhexyl phthalate(DEHP)	BL	BL	N/A	BL	BL	N/A	BL	BL	BL	BL
Diisobutyl phthalate(DIBP)	BL	BL	N/A	BL	BL	N/A	BL	BL	BL	BL

Tested Item(s)	Screening Result (mg/kg)									
	231	232	233	234	235	236	237	238	239	240
Lead (Pb)	BL	BL	BL	BL	BL	BL	BL	BL	BL	BL
Cadmium (Cd)	BL	BL	BL	BL	BL	BL	BL	BL	BL	BL
Mercury (Hg)	BL	BL	BL	BL	BL	BL	BL	BL	BL	BL
Total Chromium (Cr)	BL	BL	BL	BL	BL	BL	BL	BL	BL	BL
Total Bromine (PBBs & PBDEs)	BL	BL	N/A	BL	BL	BL	BL	BL*	BL	BL
Dibutyl phthalate(DBP)	BL	BL	N/A	BL	BL	BL	BL	BL	BL	BL
Benzylbutyl phthalate(BBP)	BL	BL	N/A	BL	BL	BL	BL	BL	BL	BL
Di-2-ethylhexyl phthalate(DEHP)	BL	BL	N/A	BL	BL	BL	BL	BL	BL	BL
Diisobutyl phthalate(DIBP)	BL	BL	N/A	BL	BL	BL	BL	BL	BL	BL

# TEST REPORT



Report No.: A2007132-C03-R06

Date: March 26, 2021

Page 17 of 27

## (1) Screening Result

Tested Item(s)	Screening Result (mg/kg)									
	241	242	243	244	245	246	247	248	249	250
Lead (Pb)	BL	BL	BL	BL	BL	BL	BL	BL	BL	BL
Cadmium (Cd)	BL	BL	BL	BL	BL	BL	BL	BL	BL	BL
Mercury (Hg)	BL	BL	BL	BL	BL	BL	BL	BL	BL	BL
Total Chromium (Cr)	BL	BL	BL	BL	BL	BL	BL	BL	BL	BL
Total Bromine (PBBs & PBDEs)	N/A	BL	N/A	BL	BL*	BL	BL	BL	BL	BL
Dibutyl phthalate(DBP)	N/A	BL	N/A	BL	BL	BL	BL	BL	BL	BL
Benzylbutyl phthalate(BBP)	N/A	BL	N/A	BL	BL	BL	BL	BL	BL	BL
Di-2-ethylhexyl phthalate(DEHP)	N/A	BL	N/A	BL	BL	BL	BL	BL	BL	BL
Diisobutyl phthalate(DIBP)	N/A	BL	N/A	BL	BL	BL	BL	BL	BL	BL

Tested Item(s)	Screening Result (mg/kg)									
	251	252	253	254	255	256	257	258	259	260
Lead (Pb)	BL	BL	BL	BL	BL	BL	BL	BL	BL	BL
Cadmium (Cd)	BL	BL	BL	BL	BL	BL	BL	BL	BL	BL
Mercury (Hg)	BL	BL	BL	BL	BL	BL	BL	BL	BL	BL
Total Chromium (Cr)	X	BL	BL	BL	BL	BL	BL	BL	BL	BL
Total Bromine (PBBs & PBDEs)	BL	BL	BL	BL	BL	BL*	BL	N/A	BL	BL
Dibutyl phthalate(DBP)	BL	BL	BL	BL	BL	BL	BL	N/A	BL	BL
Benzylbutyl phthalate(BBP)	BL	BL	BL	BL	BL	BL	BL	N/A	BL	BL
Di-2-ethylhexyl phthalate(DEHP)	BL	BL	BL	BL	BL	BL	BL	N/A	BL	BL
Diisobutyl phthalate(DIBP)	BL	BL	BL	BL	BL	BL	BL	N/A	BL	BL

Tested Item(s)	Screening Result (mg/kg)									
	261	262	263	264	265	266	267	268	269	270
Lead (Pb)	BL	BL	BL	BL	BL	BL	BL	BL	BL	BL
Cadmium (Cd)	BL	BL	BL	BL	BL	BL	BL	BL	BL	BL
Mercury (Hg)	BL	BL	BL	BL	BL	BL	BL	BL	BL	BL
Total Chromium (Cr)	BL	BL	BL	BL	BL	BL	BL	BL	BL	BL
Total Bromine (PBBs & PBDEs)	BL*	N/A	BL	BL	BL*	BL	BL	N/A	BL*	BL
Dibutyl phthalate(DBP)	BL	N/A	BL	BL	BL	BL	BL	N/A	BL	BL
Benzylbutyl phthalate(BBP)	BL	N/A	BL	BL	BL	BL	BL	N/A	BL	BL
Di-2-ethylhexyl phthalate(DEHP)	BL	N/A	BL	BL	BL	BL	BL	N/A	BL	BL
Diisobutyl phthalate(DIBP)	BL	N/A	BL	BL	BL	BL	BL	N/A	BL	BL





# TEST REPORT

Report No.: A2007132-C03-R06

Date: March 26, 2021

Page 18 of 27

## (1) Screening Result

Tested Item(s)	Screening Result (mg/kg)									
	271	272	273	274	275	276	277	278	279	280#
Lead (Pb)	BL	BL	BL	BL	BL	BL	BL	BL	BL	BL
Cadmium (Cd)	BL	BL	BL	BL	BL	BL	BL	BL	BL	BL
Mercury (Hg)	BL	BL	BL	BL	BL	BL	BL	BL	BL	BL
Total Chromium (Cr)	BL	BL	BL	BL	BL	BL	BL	BL	BL	BL
Total Bromine (PBBs & PBDEs)	BL	BL	BL	BL	BL	BL	N/A	BL*	N/A	BL
Dibutyl phthalate(DBP)	BL	BL	BL	BL	BL	BL	N/A	BL	N/A	BL
Benzylbutyl phthalate(BBP)	BL	BL	BL	BL	BL	BL	N/A	BL	N/A	BL
Di-2-ethylhexyl phthalate(DEHP)	BL	BL	BL	BL	BL	BL	N/A	BL	N/A	BL
Diisobutyl phthalate(DIBP)	BL	BL	BL	BL	BL	BL	N/A	BL	N/A	BL

Tested Item(s)	Screening Result (mg/kg)									
	281	282	283	284	285	286	287	288#	289	290
Lead (Pb)	BL	BL	BL	BL	BL	BL	BL	BL	BL	BL
Cadmium (Cd)	BL	BL	BL	BL	BL	BL	BL	BL	BL	BL
Mercury (Hg)	BL	BL	BL	BL	BL	BL	BL	BL	BL	BL
Total Chromium (Cr)	BL	BL	BL	BL	BL	BL	BL	BL	BL	BL
Total Bromine (PBBs & PBDEs)	BL*	N/A	BL	BL	BL	BL	N/A	BL	BL*	N/A
Dibutyl phthalate(DBP)	BL	N/A	BL	BL	BL	BL	N/A	BL	BL	N/A
Benzylbutyl phthalate(BBP)	BL	N/A	BL	BL	BL	BL	N/A	BL	BL	N/A
Di-2-ethylhexyl phthalate(DEHP)	BL	N/A	BL	BL	BL	BL	N/A	BL	BL	N/A
Diisobutyl phthalate(DIBP)	BL	N/A	BL	BL	BL	BL	N/A	BL	BL	N/A



# TEST REPORT

Report No.: A2007132-C03-R06

Date: March 26, 2021

Page 19 of 27

## (2) Test result for Chemical Confirmation

(a) The test result of Lead (Pb):

Testing item	Result (mg/kg)	
	218	219
Lead (Pb)	25445 <sup>&lt;2&gt;</sup>	20332 <sup>&lt;2&gt;</sup>

(b) The test result of Hexavalent Chromium (Cr(VI)):

Testing item	Result (mg/kg)				
	39	47	49	108	110
Hexavalent Chromium (Cr(VI))	N.D	N.D	N.D	N.D	N.D

Testing item	Result (mg/kg)				
	155	174	189	190	251
Hexavalent Chromium (Cr(VI))	N.D	N.D	N.D	N.D	N.D

**Remark:** N.D. = Not Detected(<MDL or LOQ), MDL = Method Detection Limit  
 IN= Inconclusive, Further chemical test, X = The range of needing to do further testing  
 BL = Below the screening limit, OL = Over the screening limit.  
 N/A= Not applicable  
 3σ= The reproducibility of analytical instruments  
 \* = The screened result was found and further chemical test  
 When conducting the test for PBBs&PBDEs, XRF was introduced to screen Br exclusively, and then chemical screening was conducted if the XRF result is X.  
 When conducting the test for Hexavalent Chromium, XRF was introduced to screen Chromium exclusively.  
 LOQ = Limit of Quantification, The LOQ of Hexavalent chromium is 0.10 µg/cm<sup>2</sup>  
 LOD= Detection limit  
 mg/kg = ppm = parts per million, 1000 mg/kg = 0.1%  
<sup><1></sup>: According to the declaration from the client, Lead (Pb) in the sample is exempted by EU RoHS Directive 2011/65/EU based on 7(c) " Electrical and electronic components containing lead in a glass or ceramic other than dielectric ceramic in capacitors, e.g. piezoelectronic devices, or in a glass or ceramic matrix compound".  
<sup><2></sup>: According to the declaration from the client, Lead (Pb) in the sample is exempted by EU RoHS Directive 2011/65/EU based on: Copper alloy containing up to 4% lead by weight  
 #= Resubmitted date: March 25, 2021



# TEST REPORT

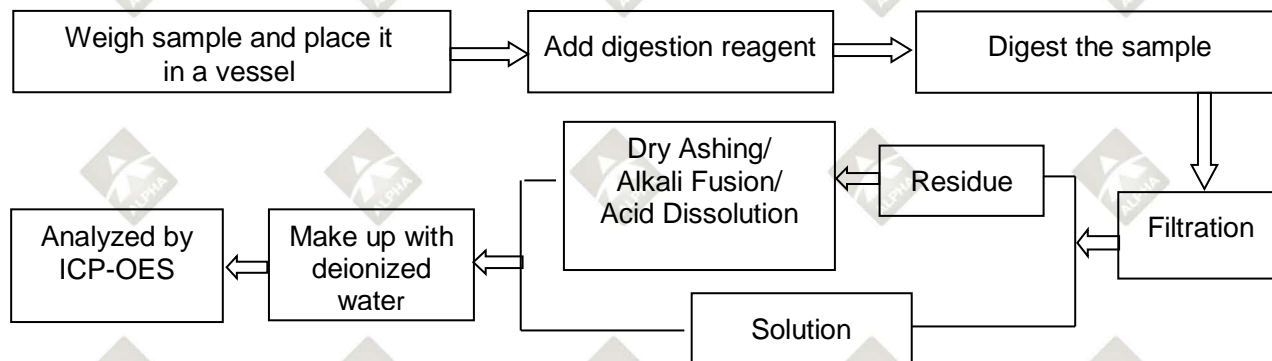
Report No.: A2007132-C03-R06

Date: March 26, 2021

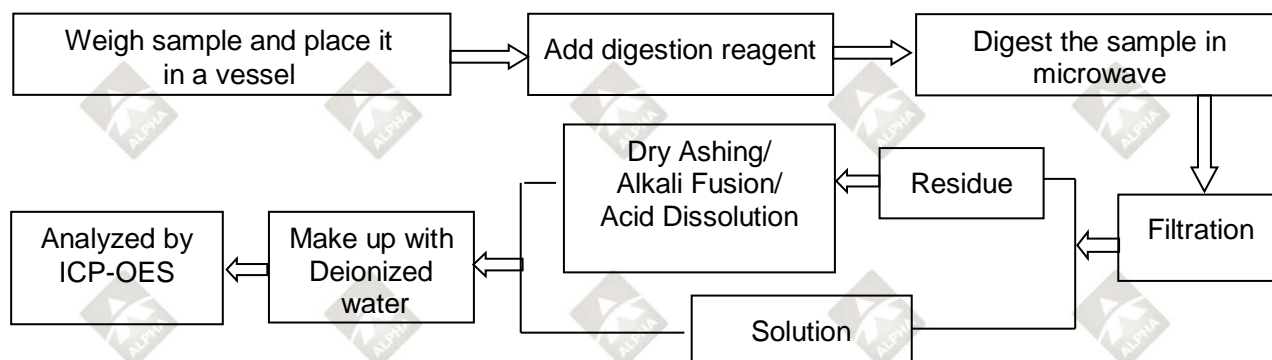
Page 20 of 27

## Test Process

### 1. Lead(Pb), Cadmium(Cd), Chromium(Cr)

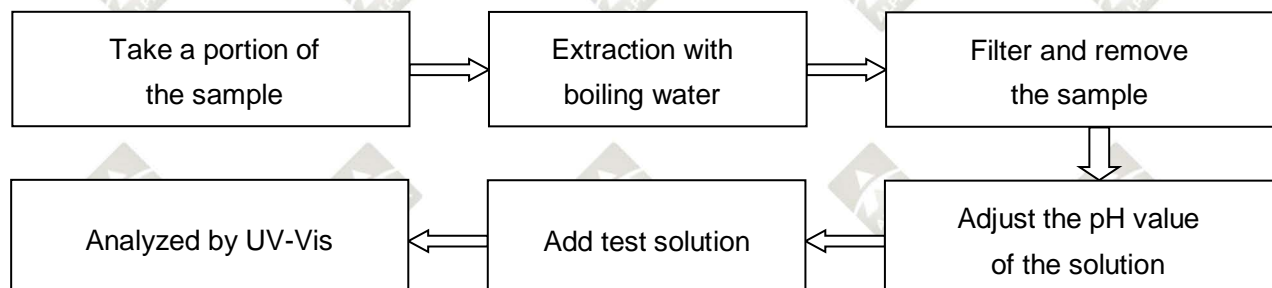


### 2. Mercury(Hg)



### 3. Hexavalent Chromium (Cr (VI))

#### (1) IEC 62321-7-1:2015 Plating/Metal sample(s)





# TEST REPORT



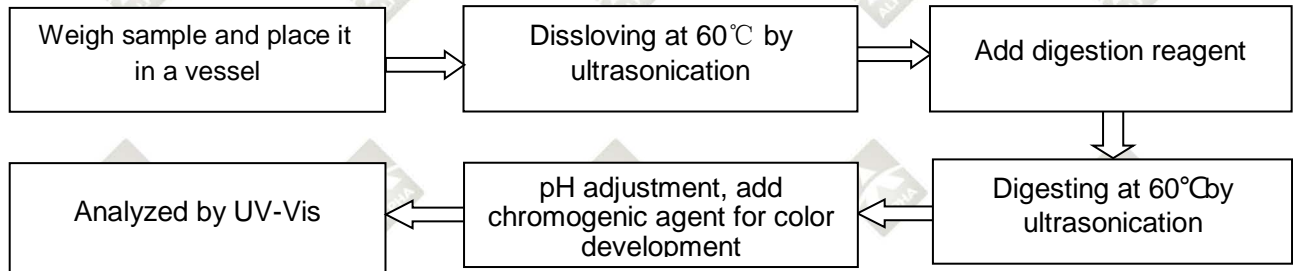
Report No.: A2007132-C03-R06

Date: March 26, 2021

Page 21 of 27

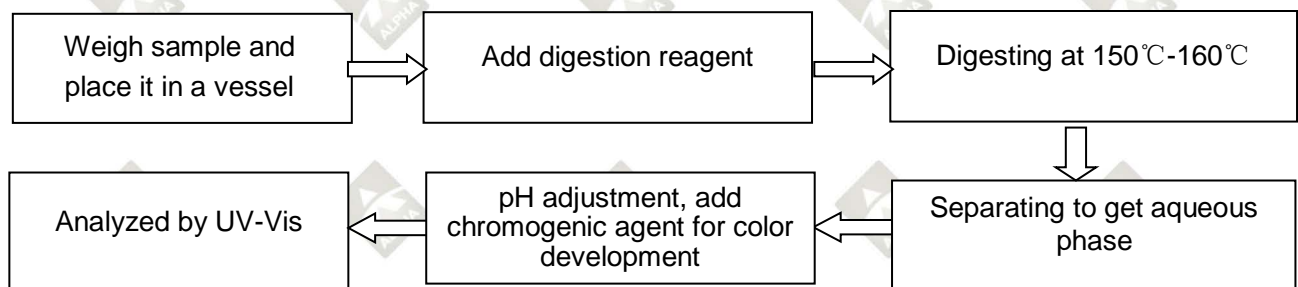
## (2) IEC 62321-7-2:2017

### Non-metal sample(s) (Material ABS/PC/PVC)

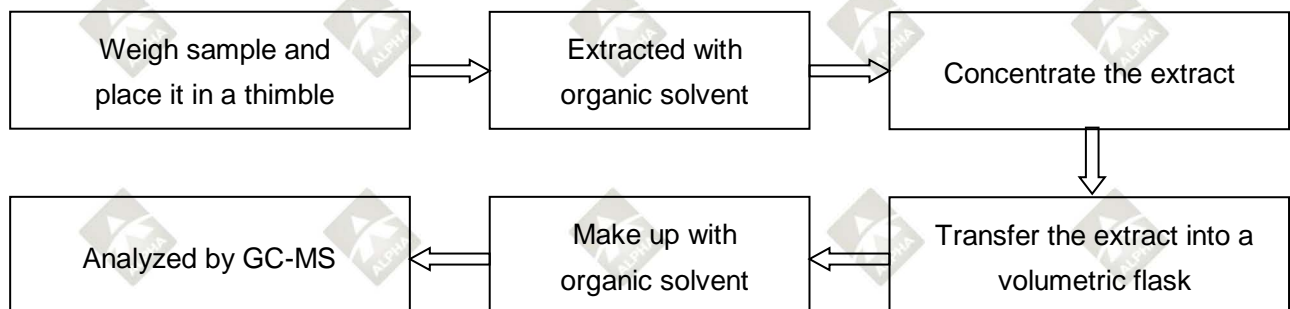


## (3) IEC 62321-7-2:2017

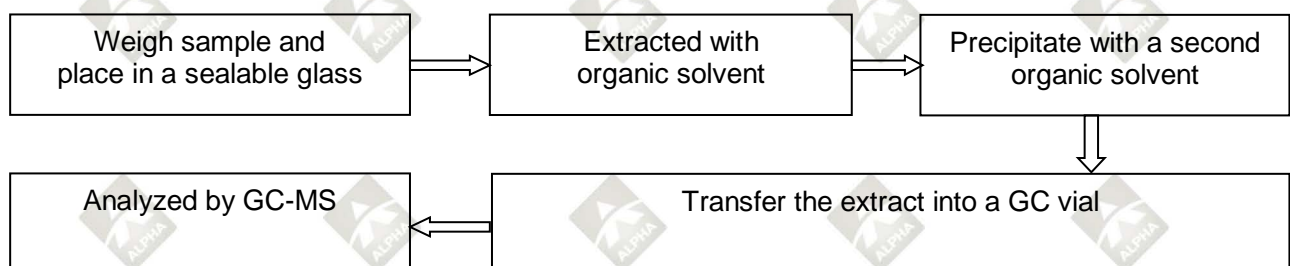
### Non-metal sample(s) (Others)



## 4. Polybrominated Biphenyls (PBBs), Polybrominated Diphenyl Ethers (PBDEs)



## 5. Phthalates(DBP/BBP/DEHP/DIBP)



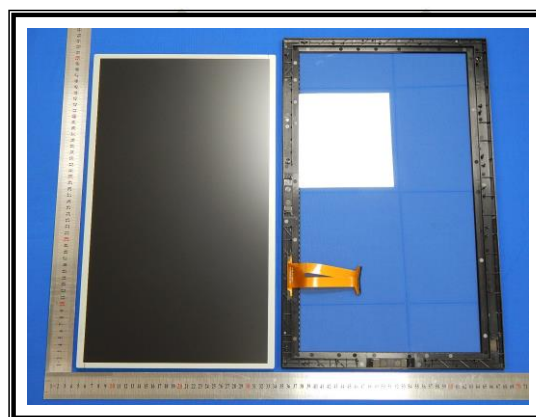
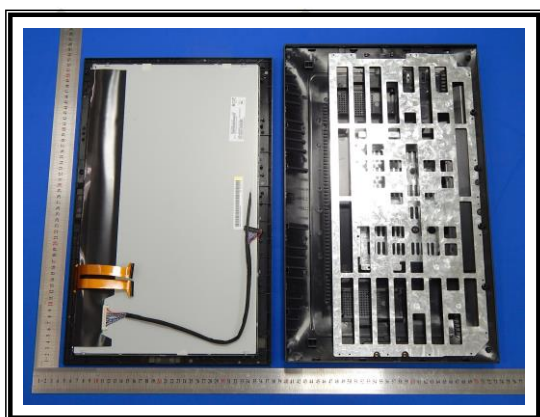
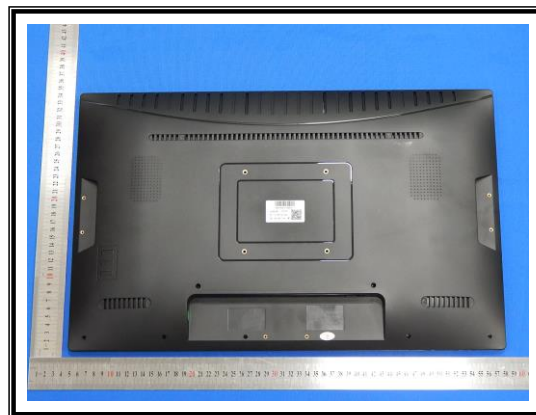
# TEST REPORT

Report No.: A2007132-C03-R06

Date: March 26, 2021

Page 22 of 27

## Tested sample photo(s)





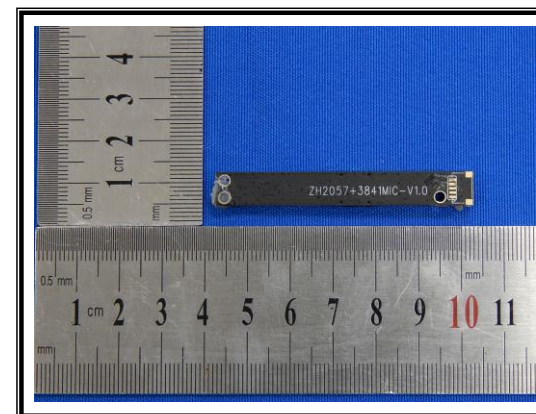
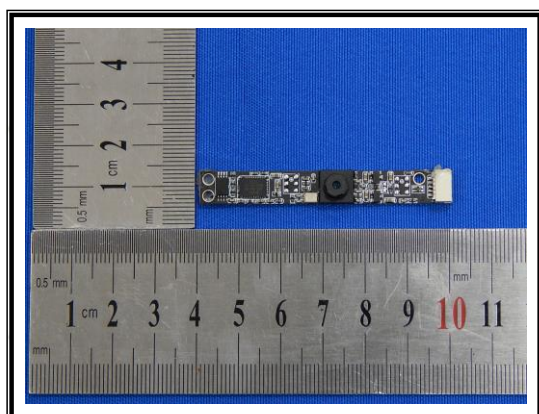
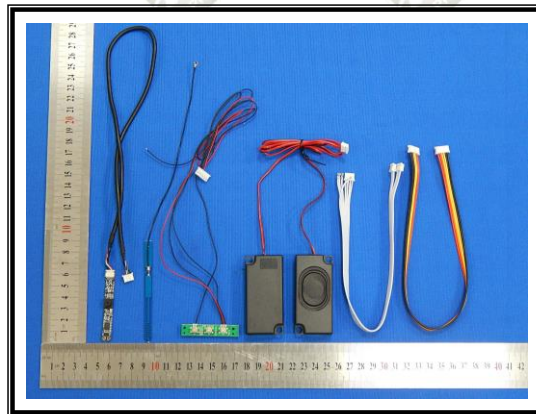
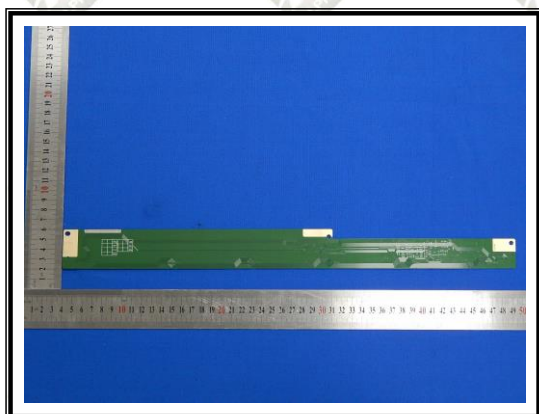
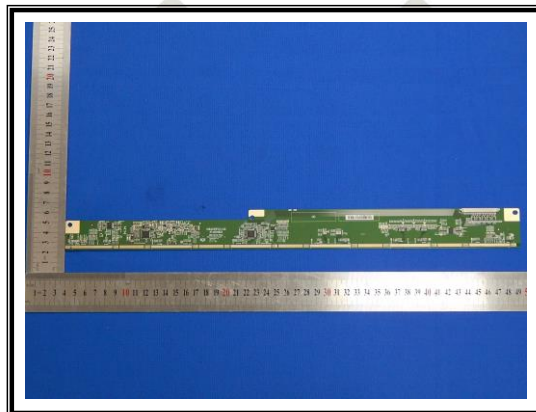
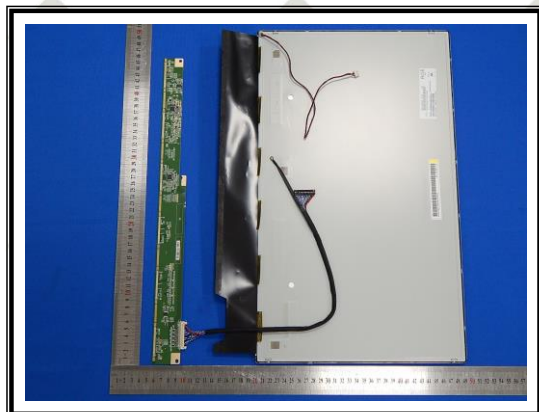
# TEST REPORT

Report No.: A2007132-C03-R06

Date: March 26, 2021

Page 23 of 27

## Tested sample photo(s)





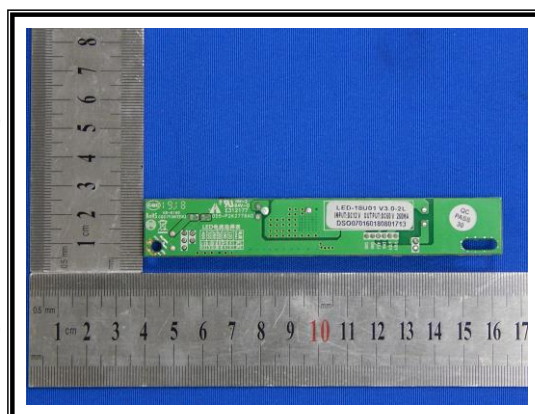
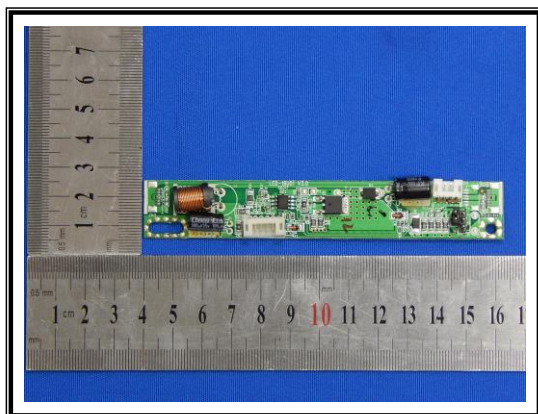
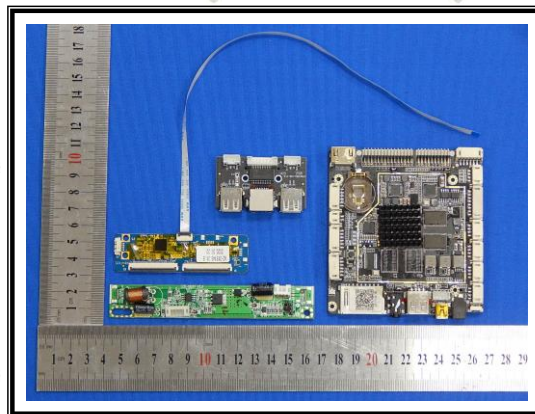
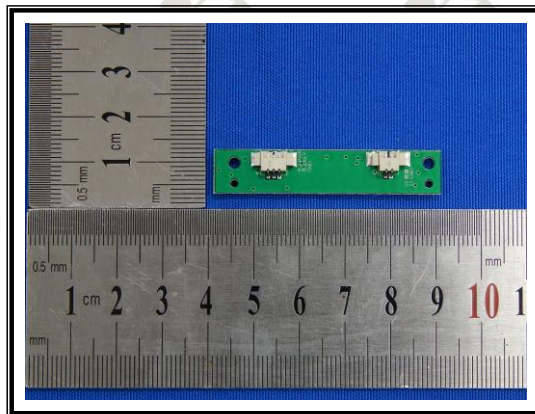
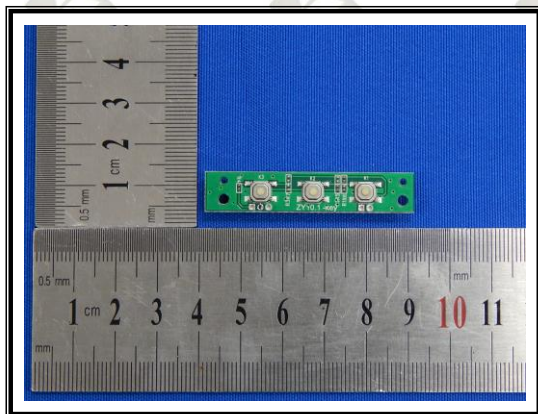
# TEST REPORT

Report No.: A2007132-C03-R06

Date: March 26, 2021

Page 24 of 27

## Tested sample photo(s)





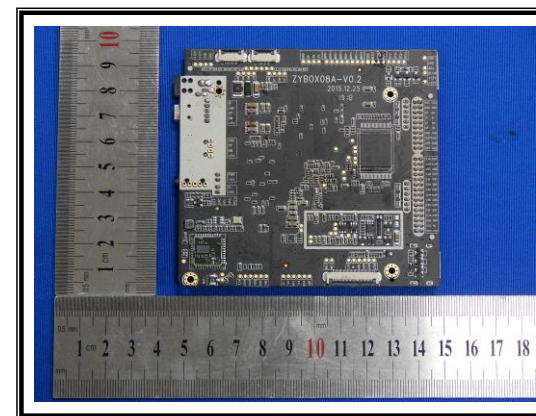
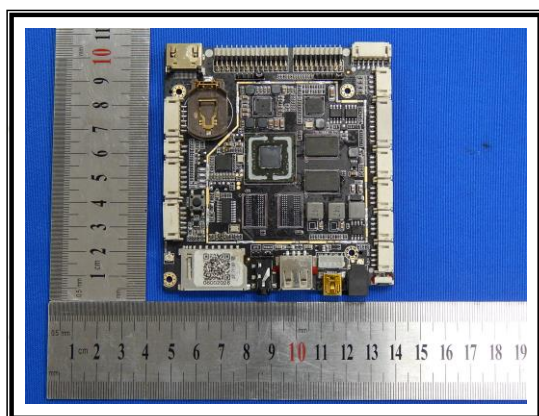
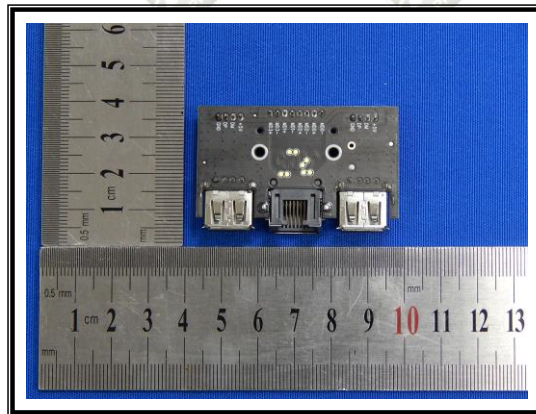
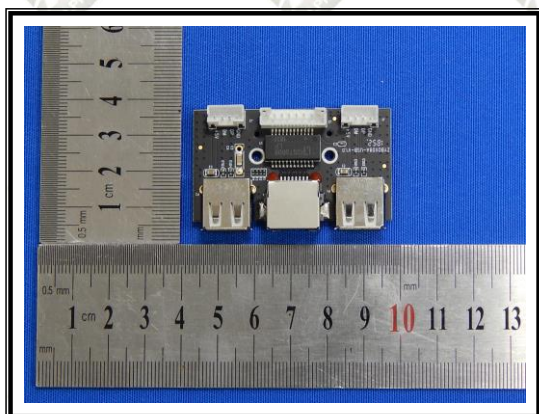
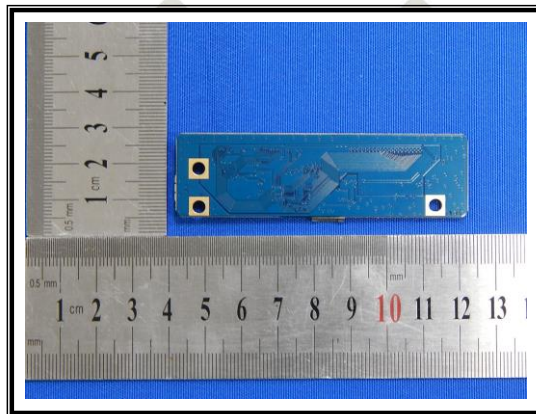
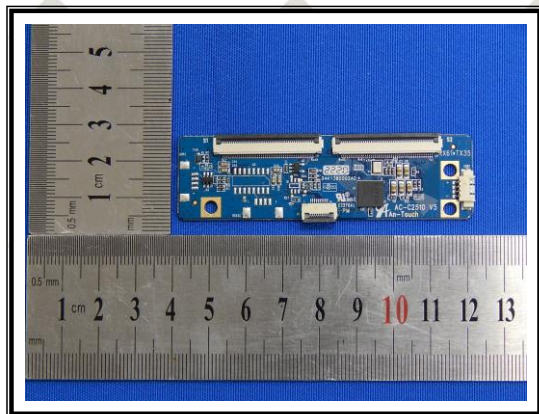
# TEST REPORT

Report No.: A2007132-C03-R06

Date: March 26, 2021

Page 25 of 27

## Tested sample photo(s)





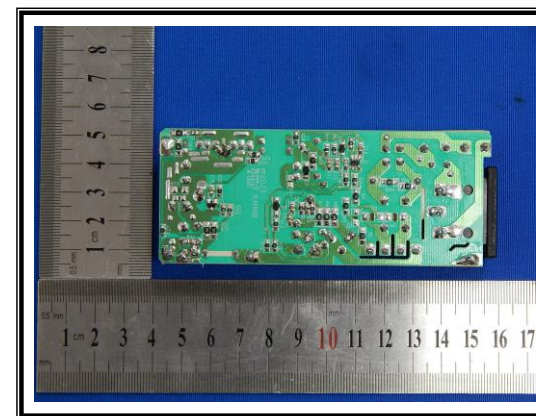
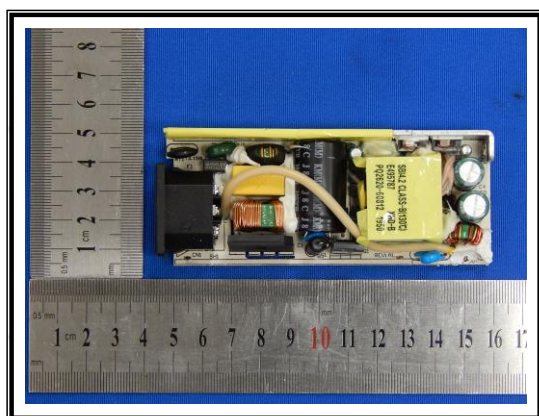
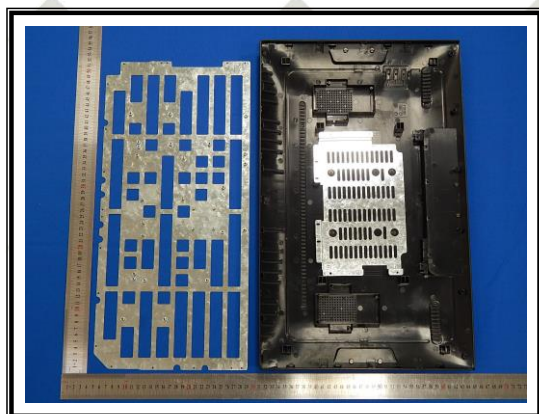
# TEST REPORT

Report No.: A2007132-C03-R06

Date: March 26, 2021

Page 26 of 27

## Tested sample photo(s)





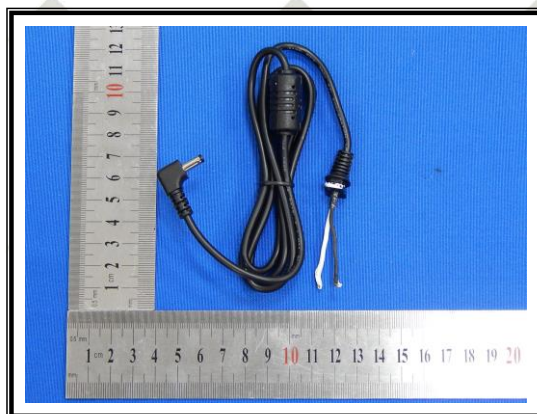
# TEST REPORT

Report No.: A2007132-C03-R06

Date: March 26, 2021

Page 27 of 27

## Tested sample photo(s)



--- End of report ---

### Statement:

1. The sample(s) and sample Information was/were provided by the client who should be responsible for the authenticity which ALPHA hasn't verified.
2. The result(s) shown in this report refer(s) only to the sample(s) tested.
3. Without written approval of ALPHA, this report can't be reproduced except in full.